



Official Website



Linkedin



# Samplock

Ultra-Low Temperature Freezer

For more information, visit [www.genepoint.com](http://www.genepoint.com)  
The product is only for industrial or scientific research purposes, not for medical use.  
It must not be used directly or indirectly for clinical diagnosis or other unauthorized clinical medical purposes.

Ultra-Low Temperature Freezer

# Samplock



## Beyond Great

Building on the consistent high quality of Genepoint, Samplock is a -80°C freezer that excels in cooling, insulation, and safety. It provides intelligent assistance to optimize workflows for sample storage, retrieval, and information management. With features as position navigation, electronic note-taking, and light prompts, Samplock ensures a convenient, comfortable, and reliable working experience.





## More Capacity

The ingeniously designed cabin structure maximizes internal space utilization.

With the same footprint, Samplock offers increased capacity, making it a more economical choice.

73,500

Up to 73,500 vials (2mL)

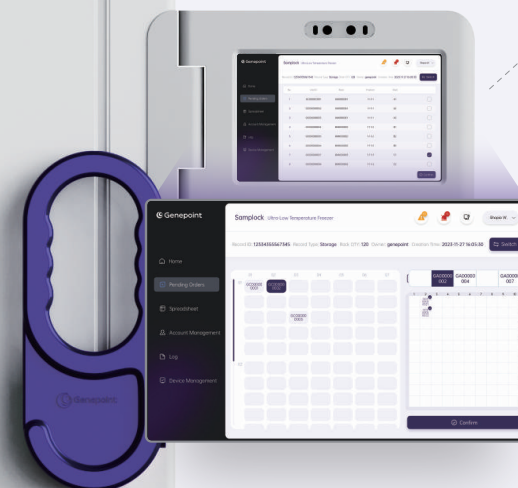
1.2m<sup>2</sup>

Projected area



List Mode

Navigation Mode



## More Visualized

Dual-mode display offers better adaptation:  
Navigation Mode and List Mode.

The LED display shows the real-time operating status, order status, and real-time temperature of the freezer, facilitating the management of multiple devices. It can maintain the temperature display for at least 48 hours during a power outage.



## More Prompt

The LED displays the real-time operating status and current temperature of the freezer. It can maintain temperature display for at least 48 hours in case of a power outage.

The LED display supports indicating the order status, making it easier for you to locate the target device when managing multiple devices.





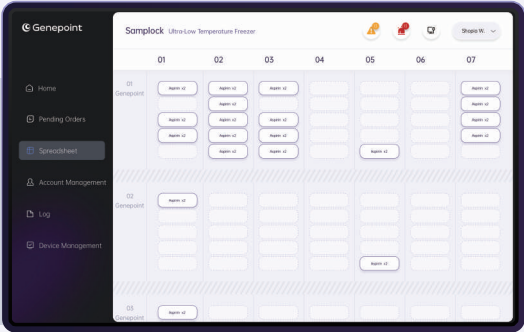
## More Traceable

Equipped with electronic notes designed specifically for laboratories and paired with hierarchical navigation, sample information is clear at a glance.

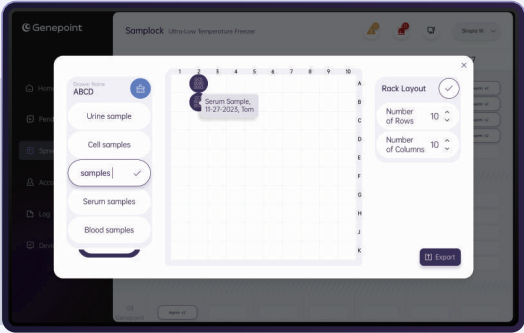
Electronic notes can be imported or exported via a USB, providing convenient access or data transfer to different storage devices at any time.

Pairing with a wireless Bluetooth keyboard makes data input more convenient.

Layer and drawer information is displayed on the homepage, making it faster to locate personal samples.



Box and tube information pop-ups help you record all sample data.



## More Convenient

The intricately designed hierarchical structure, with layers, drawers, boxes, and tubes, provides the tube positioning to easily locate the target sample.

The screen\* can flip out 180°, making it possible to be operated even when the door is open.

Pairing with a single-tube scanner allows immediate confirmation of samples.

\*Flip screen is an optional accessory.



Specifications			
Model	UFU-420	UFU-630	UFU-735
Capacity (L)	600	855	993
Temperature Range	-40°C ~ -80°C		
Power Supply	220V / 50Hz		
Dimensions (W*D*H, mm)	890*995*1990	1150*995*1990	1260*995*1990
Maximum Storage Capacity (2mL)	42,000	63,000	73,500

Optional Accessories	
Accessory	Introduction
NFC Module	Control and account login through NFC card swiping, which comes with 5 magnetic cards as standard
Facial Recognition Module	Control and account login through facial recognition
Fingerprint Recognition Module	Control and account login through fingerprint recognition
Flip Screen	The screen can be flip out 180°
LN <sub>2</sub> Backup System	Maintaining storage temperature with liquid nitrogen when power is off
Single Tube Reader	Recognize individual 1D or 2D codes with a USB connection